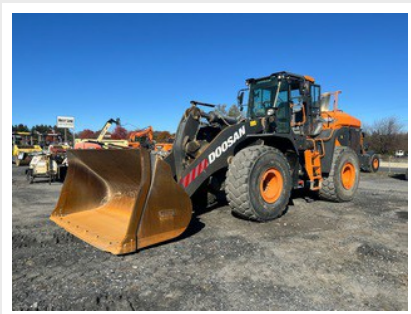


2022 DOOSAN DL480-7

Current Location: BEST LINE EQUIPMENT, Allentown, PA 18104, 570-279-6768

UNIT: DWGCWLDRKM1010024



UNIT SPECS

Customer PNC Equipment Finance

RECONDITIONING

Left Front Tire: Triangle TB516 26.5 R25 27/32" Tread\$8,000
Depth Tires have cracks in them

Body Panels: Left rear door damaged \$2,500

Loader Bucket Cutting Edge: Edge worn Edge \$650
damaged Edge missing

Total \$19,750

Left Rear Tire: Triangle TB 516 26.5 R 25 29/32" \$8,000
Tread Depth Tires have dry cracking

Loader Bucket Condition: There is cracked metal on \$600
the underside of the bucket towards the front



