

2020 DOOSAN DL220-5

UNIT: DHKCWLCXSL5050213

Price: \$0.00 USD

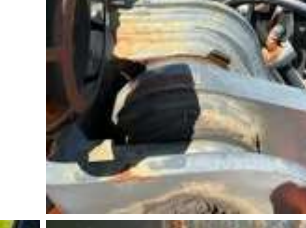
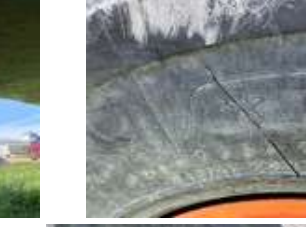
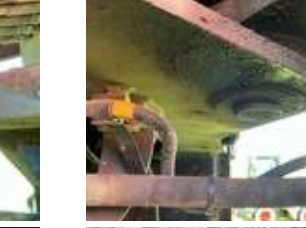
 [View Asset](#)















GENERAL APPEARANCE

Year
2020

Make
Doosan

Model
DL220-5

Pre-Operational Checks

Confirm Fluids Checked: Engine Coolant. Confirm Fluids Checked: Engine(s) Oil. Confirm Fluids Checked: Transmission Fluid. Confirm Fluids Checked: Hydraulic Fluid. Confirm Fluids Checked: Fuel Level

Paint
Damage

Body Panels

Left side cover heavy rust / corrosion, Left battery box heavy rust / corrosion, Right battery box heavy rust / corrosion, Cab door heavy rust / corrosion, . ?

Fenders

Left front damaged, Right front damaged, Right rear damaged

Steps

Left cab steps damaged, Right cab steps damaged

Hand Rails

No visible damage or missing components

Exterior Lights

rear pasenger Inoperable / damaged / missing

Cab/Canopy Overhead Structural Framework

No visible damage

Serial Number / VIN

DHKCWLXSL5050213

Serial Number

DHKCWLXSL5050213

SAFETY

Travel Alarm
Operational

Horn
Operational

Seat Belts
Operational

Safety Lock Out/Stop
Operational

Current Safety Manual
Yes

Current Operator/Maintenance Manual
No

CONTROL STATION

Seat/Armrests
No visible damage or missing components

Glass
Windshield shattered

Cab Doors
No visible damage or missing components

Steering Controls
Rating:
Good

Hydraulic Controls
Controls could not be operationally checked.

Drivetrain Controls
Rating:
Good

Dash Console
Rating:
Good

Warning Lights
Operational

Gauges
Gauges could not be operationally checked gauges are inoperable

Rear View Camera
Camera operates as intended

Air Conditioner
could not be operationally checked

Heater
Not operationally checked

Limited Function Check (Control Station)

The item was not operational. The main components could not be operationally checked.

Control Station

Cab Type, Enclosed Cab, Air Conditioner, Rear View Camera, Air Ride Seat, Autoshift

Hour Meter /Odometer Usage Reading (Start)

4045 hrs

Hour Meter / Odometer

4045 mi

ENGINE

A/C Compressor

could not be operationally checked

Starter

Not operationally checked

Exhaust System

No visible damage or missing components

Radiator

could not be operationally checked

Oil Leaks

No dripping leaks

Fuel Leaks

No dripping leaks

Cooling System Leaks

No dripping leaks

DEF / AdBlue Tank

System is leaking deaf crystals all over inside of engine as shown in photos

Limited Function Check (Engine)

The engine would crank with a jump but would not run.

Emission Status

Tier 4

Engine

2020 US EPA Label, Requires Diesel Exhaust Fluid

DRIVETRAIN

Transmission

transmission could not be operationally checked

Drive/Propel Motors

Rating:

Good

Transfer Case / Drop Box

Dripping leak

Front Drive Axle

Rating:

Good

Rear Drive Axle

Rating:

Good

Final Drives

Rating:

Very Good

Limited Function Check (Drivetrain)

The drivetrain could not be operationally checked.

HYDRAULICS

Pumps (Hydraulics)

Rating:

Good

Valves

Rating:

Good

Hydraulic Tank

Rating:

Good

Hoses (Hydraulics)

no visible leaks

Rating:

Good

Loader Lift Cylinders

Rating:

Good

Bucket Tilt Cylinders

Rating:

Good

Auxiliary Hydraulic Plumbing

Not operationally checked, Front

Multi Purpose Bucket Cylinders

Rating:

Good

Steering Cylinders

Rating:

Good

Limited Function Check (Hydraulics)

The hydraulic system could not be operationally checked.

CHASSIS

Lift Arm Condition

Rating:

Good

Chassis To Arm Pins

Rating:

Good

Tilt Linkage

Rating:

Good

Tilt Linkage Pins And Bushings

Rating:

Good

Bucket To Arm Pins

Rating:

Good

Quick Coupler To Arms Pins

Rating:

Good

Limited Function Check (Chassis)

The unit could not be started. Several components could not be checked.

Body Options

Auto Lube

Articulating Center Pins

Rating:

Good

Brake Type

Hydraulic

Brake Lines/Hoses

Not operationally checked

Rating:

Good

Park Brake

Brakes cannot be functionally checked

Rating:

Poor

Limited Function Check - Brakes

The brakes were not operationally checked.

Frame Condition

Rating:

Good

Left Front Tire

Triangle TB516 20.5R25 8/32/32" Tread Depth

Rating:

Fair

Left Rear Tire

Triangle TB516 20.5 R25 8/32/32" Tread Depth

Rating:

Fair

Right Rear Tire

Triangle TB516 20.5R25 7/32/32" Tread Depth

Rating:

Fair

Right Front Tire

Triangle TB516 20.5R25 8/32/32" Tread Depth

Rating:

Fair

Wheel Condition

No visible damage or missing components

SPECIALTY

Front Attachment

Hydraulic Coupler, 3 cyd 100 in Bucket, Other, razor RZ6500 14' snow box

Loader Bucket Condition

Rating:

Good

Loader Bucket Cutting Edge

No visible damage or missing components

Rating:

Good

Loader Quick Coupler

Not operationally checked

Rating:

Good

TIRE SIZE: 20.5R25



TIRE SIZE: 20.5R25

7/32

N/A

N/A

8/32

N/A
N/A

N/A
N/A

CHECK SECTION

RECONDITIONING

Windshield: shattered	\$1,500
Repair to start	\$4,500
Transfer Case / Drop Box: leak	\$4,500
DEF / AdBlue Tank: leaking def crystals all over inside of engine	\$3,500
Paint: Damaged/Rust	\$5,500
Both Front and Right Rear Fenders: damaged	\$3,000
Left cab steps: damaged	\$600
Exterior Lights: Inoperable	\$1,500

Right cab steps: damaged	\$600
4 Tires: Worn	\$14,000
Park Brake: Poor	\$500
Total	\$39,700


“Unit Did Not Start, Inspected As Is

UNIT SPECS


Customer

Wells Fargo (IMS)

INSPECTION LOCATION

 **Wells Fargo (IMS)**
McBain, MI 49657
555-555-5555

CURRENT LOCATION

 **Wells Fargo (IMS)**
McBain, MI 49657
555-555-5555

VERSION HISTORY

✓ 05/04/2026