

Detailed Equipment Information

[Print](#)

[Download All Photos](#)

2022 DOOSAN DX255LC-5 / HEX



- [Find it in Yard](#)
- [General Appearance](#)
- [Control Station](#)
- [Engine](#)
- [Drivetrain](#)
- [Hydraulics](#)
- [Chassis](#)
- [Undercarriage](#)
- [Specialty](#)

FIND IT IN YARD

ASSIGNED LANE AND SPOT	Located in Lane 2 Spot 10
------------------------	---------------------------

[Back To Top](#)

GENERAL APPEARANCE

SERIAL NUMBER / VIN	DHKCEBBUVM0003522	
SERIAL NUMBER FRAME STAMP LOCATION	Front Frame Passenger Side	
SELLER REFERENCE NUMBER	Seller Reference or Fleet Number:	
TIRES/ UNDERCARRIAGE	Percentage Rating:, 35	
HOUR METER / ODOMETER	2069 hrs	
CONDITION	Overall Condition for Age:, Good	
FEATURES	Located in Lane 2 Spot 10, Air Conditioner, Rear View Camera, 2021 US EPA Label, CARB Compliant, Requires Diesel Exhaust Fluid, 12 ft 2 in Stick, Auxiliary Hydraulic Plumbing, 31.5 in Triple Grouser Track Shoes, Hydraulic Quick Coupler, 33 in Digging Bucket, Hydraulic Thumb	

[Back To Top](#)





Photo 1



Photo 2



Photo 3

CONTROL STATION

[Back To Top](#)

<p>CONTROL STATION</p>	<p>Cab Details:, Air Conditioner, Rear View Camera</p>
<p>LIMITED FUNCTION CHECK</p>	<p>The main components are in place and operational as noted.</p>



Photo 1



Photo 2



Photo 3

ENGINE

[Back To Top](#)

<p>ENGINE</p>	<p>2021 US EPA Label, CARB Compliant, Requires Diesel Exhaust Fluid</p>
<p>LIMITED FUNCTION CHECK</p>	<p>The engine started and ran.</p>



Photo 1



Photo 2



Photo 3

DRIVETRAIN

LIMITED FUNCTION CHECK	The drivetrain was operational.
-------------------------------	---------------------------------

[Back To Top](#)



Photo 1



Photo 2



Photo 3

HYDRAULICS

LIMITED FUNCTION CHECK	The hydraulic system was operational.
-------------------------------	---------------------------------------

[Back To Top](#)



Photo 1

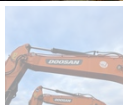


Photo 2



Photo 3

CHASSIS

BOOM/STICK DETAILS	Standard Boom, 12 ft 2 in Stick, Auxiliary Hydraulic Plumbing
LIMITED FUNCTION CHECK	The main components were operational in a limited check.

[Back To Top](#)



any safety standard or requirement of any applicable authority or regulatory body, fitness for any particular purpose, or merchantability. You are strongly advised to perform your own detailed inspection of the equipment prior to bidding.

Functions

Equipment is not tested under load. We make no representation or warranty that equipment is operating in accordance with manufacturers' specifications. No inspection has been performed with respect to any functionality aspect other than those expressly included herein. Only select photos have been provided for individual undercarriage components, and may not be indicative of the condition of the entire undercarriage as a whole.

Dimensions

Measurements are given as an estimate only. Actual loaded dimensions may vary based on truck/trailer height and the loaded machine configuration/position. It is the buyer's responsibility to measure all loads before leaving our auction site to ensure the load is safe for transport. All measurements should be verified by the buyer. DO NOT rely on these measurements for transportation purposes